



GREATER VALLEY  
CHAMBER OF COMMERCE  
MEMBER DIRECTORY

*Grow ~ Expand ~ Flourish*



# *The Valley Guide* **2025**



# UTC Railcar Repair Services LLC

Sayre, PA



As we reflect on the past year, we are filled with gratitude and pride for the resilience and determination demonstrated by our local businesses. 2024 has been a year of growth, adaptation, and collaboration. Despite the challenges we've faced, our community has come together in ways that reinforce the strength of our local economy and the spirit of innovation.

This past year, the Chamber of Commerce has had the privilege of supporting and partnering with many of you as you navigated new opportunities, overcame obstacles, and found creative ways to thrive in an ever-changing business environment. From hosting networking events to providing educational resources, our developmental initiatives will continue to evolve, offering workshops and resources to help your businesses stay competitive and informed.

We've welcomed several new members, expanding our network of local businesses and strengthening our collective voice. Our signature events, such as The Greater Valley Chamber of Commerce Business Banquet, Tastes of the Valley, and our annual golf tournament, saw record attendance and created valuable opportunities for connection, exposure, and growth.

As always, the Chamber is here to support you. If there's anything we can do to help you achieve your goals in 2025, please don't hesitate to reach out. Together, we will continue to build a vibrant, sustainable, and prosperous business environment for our community.

Thank you for your continued partnership, and I look forward to another year of shared success.

~ Kim Mastrantonio



## Thoughts from the President



With the start of 2025, we can look back on 2024 as a year marked by growth, resilience and a deepened sense of community. Together we have navigated challenges, celebrated achievements and strengthened the bonds that make our Chamber and our members such a vital part of our local economy.

Although we said goodbye to a few long-standing anchors of our community, we welcomed several new businesses, each bringing fresh new energy and ideas. It's been inspiring to see members collaborating to create opportunities and drive local innovation. From hosting successful events to supporting local initiatives, we have demonstrated the power of collective effort in making our community a better place for all. 2024 reaffirmed our commitment to support small businesses and to foster economic development. The 2025 Valley Guide showcases our members and is an effective tool used to attract visitors to our Valley and our diverse, unique and committed Valley businesses.

A new year brings fresh opportunities to grow, connect and make an impact in business and community. Whether it's launching new projects, building stronger relationships, or giving back to our community, the possibilities are endless.

I would like to extend my Thanks to the Junior Chamber of Commerce students for their contributions to the 2025 Valley Guide. In addition, deep gratitude goes to our members, whose dedication to business and community fuels our success.

~ Jan Lee



## Reflections from our Executive Director



# PLACES TO EAT

## **1882 on Desmond**

128 Desmond St., Sayre, PA  
570-882-9162

## **Alliger's House of Wings**

201 Spring St., Sayre, PA  
570-888-9805

## **Applebee's**

1860 Elmira St., Sayre, PA  
570-888-3300

## **Becky's Diner**

310 Broad St., Waverly, NY  
607-565-7668

## **Beeman's Restaurant & Lounge**

1356 Elmira St., Sayre, PA  
570-888-2345

## **Bethie's Place**

273 County Rd. 60, Waverly, NY  
607-565-2618

## **Blackburn 1897**

130 W. Lockhart St., Sayre, PA  
570-888-8889

## **Bluestone Brewing Co. Pg. 50**

18 Pitney St., South Waverly, PA  
570-731-0222

## **Broad Street Pub**

371 Broad St., Waverly, NY  
607-249-6361

## **Callears Bar-B-Que Restaurant & Catering**

2081 Elmira St., Sayre, PA  
570-888-1088

## **Celebrations Black Diamond Café**

100 South Elmer Ave., Sayre, PA  
570-767-7038

## **Coaches Pizza Pg. 42**

227 Broad St., Waverly, NY  
607-565-2111

## **The Grille at the Train Station**

718 N. Lehigh Ave., Sayre, PA  
570-888-3100

## **The Grumpy Grizzly Pg. 41**

245 Broad St., Waverly, NY  
607-249-6083

## **Handmade by Holly-Cookies**

Division St., Waverly, NY  
607-857-3647

## **Hotel Bradford Brew**

## **House and Beer Garden**

108 N. Thomas Ave. Sayre, PA  
570-423-1061

## **Mad Hatters Café Pg. 36**

400 N. Main St., Athens, PA  
570-731-7183

## **Mangialardo's Restaurant**

115 S. Thomas Ave., Sayre, PA  
570-888-9944

## **Kurt's Making Whoopie Pg. 34**

Sayre, PA 570-888-9102

## **Parrish Family Deli**

501 S. Keystone Ave., Sayre, PA  
570-888-4974

## **Pudgie's Pizza**

1 Garfield St., Waverly, NY  
607-565-2004

## **Sam's Bar & Grill Pg. 39**

912 N. Wilbur Ave., Sayre, PA  
570-731-4557

## **Stars & Stripes Sports Lounge**

317 Broad St., Waverly, NY  
570-423-1061

## **Tanners Bar & Grill Pg. 21**

875 Rt. 199, Athens, PA  
570-888-6531

## **The Legacy Lounge at The Loom**

439 Waverly St., Waverly, NY  
607-948-4017

## **Tomasso's Restaurant**

398 County Rd. 60, Waverly, NY  
607-565-2323

## **Valley Bowling Center Pg. 44**

13 N. Chemung St., Waverly, NY  
607-565-9946

## **Vanilla Bean Café**

119 West Packer Ave., Sayre, PA  
570-731-4457

## **Wolverine Den**

1 Frederick St., Waverly, NY

# PLACES TO SHOP

## **Ashley's Attic**

441 Broad St., Waverly, NY | 570-423-1598

## **Awareness Intuitive Studio & Gift Shop Pg. 35**

154 Desmond St., Sayre, PA | 570-886-2008

## **Bee's Cr3ations - Brianna Houser**

Sayre, PA | 561-370-4432

## **Bert's Pharmacy**

144 Desmond St., Sayre, PA | 570-888-2394

## **Big Foote's Sporting Goods**

379 Broad St., Waverly, NY | 607-565-2365

## **Blue Bag Boutique**

339 Broad St., Waverly, NY | 607-565-4515

## **Brady Rose Boutique**

203 Desmond St., Sayre, PA | 570-888-3566

## **Broad Street Records**

368 Broad St., Waverly, NY | 607-565-2490

## **Chandler's Antique & Artisan Market**

448 N. Keystone Ave., Sayre, PA | 570-890-9190

## **Children's Depot**

508 S. Elmira St., Athens, PA | 570-888-9261

## **Croft Lumber**

101 Spring St., Sayre, PA | 570-888-2364

## **Crystallize with Kate**

201 South Elmer Ave., Sayre, PA | 570-423-7445

## **Dandy Mini Marts Pg. 21**

Over 60+ locations! | [www.godandy.com](http://www.godandy.com)

## **D & M Bait & Sporting**

118 Susquehanna St., Athens, PA | 570-890-9050

## **Doggy Doos Boutique & Barkery**

136 W. Lockhart St., Sayre, PA | 570-731-7336

## **Friendship Star Quilt Shop Pg. 16**

131 Center St., Sayre, PA | 570-886-2296

## **Grumpy Gift Shop Pg. 44**

241 Broad St., Waverly, NY | 607-249-6083

## **Jayne's Flowers & Gifts Pg. 45**

429 Fulton St., Waverly, NY | 607-565-2463

## **Keystone Cards Pg. 15**

515 S. Keystone Ave., Sayre, PA | 570-888-6331

## **Meyer's RV & Marine Pg. 37**

209 Spring St., Sayre, PA | 570-888-2255

## **My Girlfriend's Jewelry Box**

222 Broad St., Waverly, NY | 607-241-2323

## **Northrup's Gun Shop**

6838 Wolcott Hollow Rd., Athens, PA | 570-423-3502

## **Reagan Steele Jewelers**

108 W. Lockhart St. Sayre, PA | 570-888-9604

## **Sayre's Trolley Stop**

138 Lockhart St., Sayre, PA

[www.facebook.com/sayrestrolleystop](http://www.facebook.com/sayrestrolleystop)

## **Shipwreck Bargains**

232 S. Main St., Athens, PA | 607-367-0627

## **Short & Sweets Crystals**

404 N. Main St., Athens, PA | 570-423-0099

## **Staggering Unicorn Winery Pg. 27**

314 S. Main St., Athens, PA | 570-888-7070

## **Red Door / Tioga County Open Door Mission**

359 Broad St., Waverly, NY | 607-249-6062

## **Tom's Hardware & Feed**

615 Cayuta Ave., Waverly, NY | 607-565-2736

## **TOPS Markets**

3014 Elmira St., Sayre, PA | 570-882-9188

## **U Can Tan Pg. 35**

150 Desmond St., Sayre, PA | 570-882-8826

## **Valley Flower Shop**

201 Broad St., Waverly, NY | 607-565-2035

## **Valley Thrift & Consign**

450 N. Keystone Ave., Sayre, PA | 570-890-9203

## **Waverly Liquor & Wine**

442 Fulton St., Waverly, NY | 607-565-9221

## **WillowFaith Gift & Home Co.**

368 County Rt. 60, Waverly, NY | 607-529-3427

## **WJ Sporting Goods**

144 Broad St., Waverly, NY | 607-565-8008

# PLACES TO PLAY, STAY AND LEARN

## RECREATION

### **Bradford County Regional Arts Council**

Sayre Movie Theatre  
205 S. Elmer Ave., Sayre, PA  
570-882-9000

### **Binghamton Rumble Ponies**

311 Henry St., Binghamton, NY  
607-722-3866

### **The Club at Shepard Hills Golf Course**

17 Chemung St., Waverly, NY  
607-565-9500

### **DJ's Golf Center / Bethie's Place**

273 County Rd 60, Waverly, NY  
607-565-2618

### **Endless Mountain Riders - Chapter PAR WR**

170 Cleveland Rd., Sayre, PA  
607-857-1977

### **Lecom Event Center/Aviator Hockey**

155 N. Main St., Elmira, NY  
607-731-6150

### **Prestige Dance Co.**

330 Broad St., Waverly, NY  
607-768-3231

### **Tioga Downs Casino**

2384 West River Rd., Nichols, NY  
607-699-3900

### **Tomasso's Golf Course**

398 County RD 60, Waverly, NY  
607-565-2323

### **Valley Bowling Center & Strike Shack Pg. 44**

13 N. Chemung St., Waverly, NY  
607-565-9946

### **Valley Bridge Club**

90 Pine Tree Rd., Sayre, PA  
570-888-6311

### **Waverly Sports Complex**

533 Broad Street, Waverly, NY  
607-738-6886

## TOURISM

### **Bradford County Tourism Pg. 52 Promotion Agency**

1 Washington St., Towanda, PA  
1-570-265-8687

## VENUES

### **Best Western Pg. 51 Grand Victorian Inn**

255 Spring St., Sayre, PA  
570-888-7711

### **The Loom & Legacy Lounge**

439 Waverly St., Waverly, NY  
607-948-4017

### **Staggering Unicorn Winery Pg. 27**

314 S. Main St., Athens, PA  
570-888-7070

### **The Club at Shepard Hills Golf Course**

17 Chemung St., Waverly, NY  
607-565-9500

## LODGING

### **Best Western Pg. 51**

#### **Grand Victorian Inn**

255 Spring St., Sayre, PA  
570-888-7711

#### **Comfort Inn & Suites**

2160 Elmira St., Sayre, PA  
570-888-1100

#### **Hampton Inn**

3080 N. Elmira St., South Waverly, PA  
570-882-1166

### **Microtel Inn & Suites Pg. 32**

1775 Elmira St., Sayre, PA  
570-888-0001

## REAL ESTATE

### **Century 21 Jackson Real Estate**

111 S. Main St., Athens, PA  
570-888-0021

### **Brenda Campbell 607-742-4709**

### **Carrie Henry 607-857-0220 Pg. 48**

**Denise Wells 607-857-3175**

### **Coldwell Banker – Val O'Neil**

201 Desmond St. Sayre, PA  
607-725-0959

### **Knolles Real Estate - Taunya Knolles**

322 South Main St., Athens, PA  
Tracie Shambo 607-215-2440

### **The Dunn Group Pg. 38**

1754 Elmira St., Sayre, PA  
570-888-2407

### **Realty ONE Group Supreme**

423 S. Main St., Athens, PA  
**Rebecca Romig 607-857-2128**  
**Steph Rogers Robinson 607-857-8161**

### **United Country Real Estate -**

#### **Tom Mullen & Associates**

468 Pennsylvania Ave., Waverly, NY  
607-592-1756

## RENTALS & HOUSING

### **Palmer Mobile Homes**

147 Rt. 17C, Waverly, NY  
607-565-4535

## EDUCATION

### **Athens Area School District**

253 Pennsylvania Ave., Athens, PA  
570-888-7766

### **Elmira College**

One Park Place, Elmira, NY  
607-735-1825

### **Epiphany School**

627 Stevenson St., Sayre, PA  
570-888-5802

### **Lackawanna College Pg. 20**

1024 S Main St., Towanda, PA  
570-265-3449

### **Sayre Area School District**

333 W Lockhart St., Sayre, PA  
570-888-6121

### **Sayre Public Library**

122 S. Elmer Ave, Sayre, PA  
570-888-2256

### **Spalding Memorial Library**

724 S. Main St., Athens, PA  
570-888-7117

### **Waverly Central School District**

1 Frederick St., Waverly, NY  
607-565-8101

### **Waverly Free Library**

18 Elizabeth St., Waverly, NY  
607-565-9341

## MUSEUMS

### **Sayre Historical Society**

103 N. Lehigh Ave., Sayre, PA  
570-882-8221

### **Tioga Point Museum**

724 S. Main St., Athens, PA  
570-888-7225

### **Waverly Historical Society**

PO Box 45, Waverly, NY  
607-731-4102

# SERVICE PROVIDERS

## **CHILD CARE**

**Bradford Tioga HeadStart**  
5 Riverside Plaza, Blossburg, PA  
570-638-1400

## **Foundations Early Learning Center, RVR-YMCA**

1000 N. Elmer Ave., Sayre, PA  
570-731-3999

## **CONSTRUCTION/EXCAVATION**

### **Austin Excavating**

121 Talmadge Hill, Waverly, NY  
607-565-4313

### **B&S Construction**

303 S. Thomas Ave., Sayre, PA  
607-742-4219

### **G. Webster Inc.**

460 Gateway Industrial Park Rd., Athens, PA  
570-888-6525

### **Porters Concrete Service Pg. 33**

Shepard Rd., Waverly, NY  
607-565-2452

### **Robinson Contracting Pg. 15 & Landscaping**

4490 Milan Rd., Milan, PA  
570-596-7100

### **DRIVING INSTRUCTION**

#### **Empower Driving Solutions**

371 Halsey Valley Rd., Barton, NY  
607-759-7867

## **EMERGENCY SERVICES/TRANSPORT**

### **Greater Valley EMS**

904 N. Lehigh Ave., Sayre, PA  
570-888-6000

## **ENGINEERS/CONSULTANTS**

### **Civil & Environmental Consultants**

227 S. Main St., Athens, PA  
570-575-8053

### **Fagan Engineers**

113 E. Chemung St., Elmira, NY  
607-734-2165

### **Hunt Engineers Architects & Land Surveyors, PC**

Progress Plaza, 1 Elizabeth St., Towanda, PA  
570-265-4868

### **JHA Companies**

466 South Main St., Montrose, PA  
844-542-4757

### **Moody and Associates, Inc.**

101 N. Main St., Athens, PA  
877-602-3120

### **SR Architecture Studio PC Pg. 14**

Daniel Reinhart, AIA, NCARB  
607-283-4434

## **EVENT RENTALS**

### **A La Carte Décor Pg. 46**

South Main St., Athens, PA  
607-269-5313

## **FLORISTS**

### **Jayne's Flowers & Gifts Pg. 45**

429 Fulton St., Waverly, NY  
607-565-2463

### **Valley Flower Shoppe**

201 Broad St., Waverly, NY  
607-565-2035

## **GARAGE DOORS – INSTALLATION & SERVICE**

### **Elevated Solutions**

122 South River Street, Athens, PA  
607-742-0319

## **HEATING/PLUMBING**

### **Hal Fish Heating & Air Cond.**

117 Judge Herrick St., Athens, PA  
570-358-3183

### **Jeff Paul Plumbing & Heating**

800 S. Elmer Ave., Sayre, PA  
570-888-6444

## **FUNERAL HOMES/ CREMATION/MONUMENTS**

### **Belles Monuments**

502 N. Keystone Ave., South Waverly, PA  
570-888-8188

### **Blauvelt Funeral Home Pg. 45**

625 Broad St., Waverly, NY  
607-565-7301

### **Thomas Cremation & Funeral Service**

1297 Elmira St., Sayre, PA  
570-888-0756

## **HUMAN RESOURCES**

### **The Simonds Group: Michelle Simonds**

Athens, PA | 607-742-9491

## **NOTARY SERVICE**

### **Hughes Notary Service**

706 S. Lehigh Ave., Sayre, PA  
570-888-2225

## **NURSING HOME/SENIOR LIVING**

### **Bradford Hills Nursing & Rehabilitation Center**

15900 US-6, West Burlington, PA 16947  
(570) 297-4111

### **Elderwood Waverly Community Pg. 47**

37 N. Chemung St., Waverly, NY  
607-565-2861

### **Sayre Health Care Center**

151 Keefer Lane, Sayre PA  
570-888-2192

### **Sayre Personal Care Residence**

151 Keefer Lane, Sayre, PA  
570-888-2192

### **Sayre Memory Care Residence**

1001 N. Elmer Ave., Sayre, PA  
570-888-2192

## **PHONE SYSTEMS/SECURITY/ TELECOMMUNICATIONS**

### **Teledair Communications**

2541 Elmira St., Sayre, PA  
570-888-7492

## **PICTURE FRAMING**

### **Spencer's Art & Framing**

210 E. Pine St., Athens, PA  
570-423-8620

## **PHOTOGRAPHY**

### **Eskimo Kisses Photography**

420 South Main St., Athens, PA  
570-886-0217

## **PHOTO RESTORATION**

### **BrewerGrafix**

Sayre, PA | mikke.brewer760@gmail.com

## **TIRES**

### **Foote's Tire & Auto**

3324 Elmira St., Sayre, PA  
570-888-6663

### **Rolling Tire Shop**

307 S. Elmira St., Athens, PA  
570-888-4039

## **RECYCLE/GARBAGE**

### **Casella Waste Systems**

Cty. Rd. 60, Lowman, NY  
607-358-7828

### **Hafler Haul Away**

Pine Street, Waverly, NY  
607-331-7517

### **Northern Tier Solid Waste Authority**

108 Steam Hollow Rd., Troy, PA  
570-549-6737

## **UTILITIES**

### **Empire Access**

570-549-6737

### **First Energy**

1 Plaza Dr., Towanda, PA  
1-800-545-7741

### **JH Murray & Son**

2592 Penna Ave., South Waverly, PA  
570-888-2115

### **Valley Energy Pg. 18**

523 S. Keystone Ave., Sayre, PA  
570-888-9664

## **WASTEWATER TREATMENT**

### **Valley Joint Sewer Authority**

1 S. River St., Athens, PA  
570-888-2253

## **WEATHER SERVICES**

### **Wiles Valley Weather – Nathan Wiles**

11176 N. Rome Rd., Athens, PA  
607-423-6151

## **WEBSITES/MARKETING**

### **Zehr.net**

2061 Ridge Rd., Athens, PA  
607-426-6586

## **WORK FORCE**

### **PA CareerLink/Bradford County Action**

312 Main St., Towanda, PA  
570-265-2171

# PLACES TO TAKE CARE OF YOUR BUSINESS

## **ACCOUNTANTS/ TAX PREPARATION**

### **Freedom Financial Tax Pg. 16**

119 West Packer Ave., Sayre, PA  
866-401-1090

### **LaBarr & LaBarr**

430 N. Keystone Ave., South Waverly, PA  
570-888-2359

### **Wiles & Morales Pg. 15**

228 S. Main St., Athens, PA  
570-890-9500

## **AUCTIONS**

### **Ingham's Auction Service Pg. 42**

Route 34, Lockwood, NY  
donnieinghamauctions.hibid.com  
607.426.5188 • 607.222.1575  
607.598.2368

## **AUTOMOTIVE**

### **Ferrario Auto Team Pg. 39**

102 Spring St., Sayre, PA  
570-888-2367

### **Williams Auto Group**

906 N. Elmira St., Sayre, PA  
570-888-2281

## **AUTOMOTIVE REPAIR**

### **Birdsall's Auto Works LLC**

109 New St., Athens, PA  
570-423-9369

### **Foote's Tire & Auto**

3324 Elmira St., Sayre, PA  
570-888-6663

### **Joe's Automotive**

504 S. Main St., Athens, PA  
570-888-0691

### **Rolling Tire Shop**

307 S. Elmira St., Athens, PA  
570-888-4039

## **BANKS & CREDIT UNIONS**

### **C & N Banks Pg. 41**

428 S. Main St., Athens, PA  
570-888-2291

1827 Elmira St., Sayre, PA  
570-888-2220

### **Chemung Canal Trust Pg. 19**

405 Chemung St., Waverly, NY  
607-565-8168

### **First Citizens Pg. 17**

### **Community Banks**

1778 Elmira St., Sayre, PA | 570-888-4900  
306 W. Lockhart St., Sayre, PA  
570-888-6602

### **First Heritage Federal Credit Union**

202 Dennison Pkwy. East, Corning, NY  
607-936-4667

### **Guthrie Community Credit Union Pg. 49**

104 N. Elmer Ave., Sayre, PA  
570-888-7135

### **IR Federal Credit Union Pg. 36**

1970 Elmira St., Sayre, PA  
570-888-7121

### **M&T Bank Pg. 38**

230 Desmond St., Sayre, PA  
570-888-2284

### **PS Bank**

205 W. Lockhart St., Sayre, PA  
570-888-9850

### **Tioga State Bank Pg. 15**

436 Cayuta Ave., Waverly, NY  
607-565-8166

### **Visions Federal Credit Union Pg. 12**

2121 Elmira St., Sayre, PA  
570-888-0507

## **BUSINESS SOLUTIONS**

### **A Wild Sign Co.**

3360 Day Hollow Rd., Owego, NY  
607-748-3986

### **Clare Printing Pg. 13**

206 S. Keystone Ave., Sayre, PA  
570-888-2244

### **DATAZANG Pg. 46**

1310 Pennsylvania Ave., Sayre, PA  
844-570-8324

### **Northern Tier Regional Planning & Development Commission**

312 Main St., Towanda, PA  
570-265-9103

### **The Simonds Group: Michelle Simonds**

Athens, PA | 607-742-9491

### **Team Tioga Pg. 33**

56 Main St., Owego, NY  
607-687-8254

### **The UPS Store Pg. 18**

1766 Elmira St., Sayre, PA  
570-888-7447

### **WJ Graphics & Sporting Goods**

144 Broad St., Waverly, NY  
607-565-8008

## **FINANCIAL**

### **Goldman McEvoy Group**

100 W. Church St., Elmira, NY  
607-206-0208

### **Edward Jones/Jason Glowski**

150 Broad St., Waverly, NY  
607-565-7152

### **Hudock Capital Group, LLC**

400 Market St., Williamsport, PA  
866-855-0569

### **Stone House Investment Management, LLC**

107 South Elmer Ave., Sayre, PA  
570-721-1487

## **INSURANCE**

### **2 Rivers Insurance Pg. 41**

120 Susquehanna St., Athens, PA  
570-888-2669

### **Chamber Choice/My Benefit Advisor**

7000 Stonewood Dr., Wexford, PA  
1-800-377-3539

### **The Dunn Group Pg. 38**

1754 Elmira St., Sayre, PA  
844-386-6477

### **Eby Insurance LLC**

426 S. Keystone Ave., Sayre, PA  
570-888-3853

### **Freedom Financial Insurance Pg. 16**

119 West Packer Ave., Sayre, PA  
833-670-0306

### **Gannon Associates Pg. 18**

315 S. Main St., Athens, PA  
570-888-1200

### **State Farm - Adam Bennett Pg. 13**

103 S. Elmira St., Athens, PA  
570-886-2494

### **The Simonds Group: Michelle Simonds**

Athens, PA | 607-742-9491

## **LAWYERS**

### **Griffin, Dawsey, DePaola & Jones, P.C.**

237 Desmond St., Sayre, PA  
570-888-8600

### **Landy & Rossettie - Attorneys At Law**

228 Desmond St., Sayre, PA  
570-888-7753

## **OFFICE RENTAL**

### **Kellar Industries/**

### **The Enterprise Center**

703 S. Elmer Ave., Sayre, PA  
570-886-0574

# LOCAL NON-PROFITS, MEDIA AND GOVERNMENT

## **BUSINESS ASSOCIATIONS**

**Athens Business Association**  
abamembers1@gmail.com

**Sayre Business Association**  
sayrebusinessassociation@gmail.com

**Waverly Business Association**  
marketing@discoverwaverly.com

## **GOVERNMENT**

**Bradford County**  
301 Main St., Towanda, PA  
570-265-1727

**Team Tioga Pg. 33**  
56 Main St., Owego, NY  
607-687-8254

## **LOCAL MEDIA**

**Radigan Media Pg. 17**  
193 S. Keystone Ave., Sayre, PA  
570-888-7745

**Morning Times Newspaper**  
201 N. Lehigh Ave., Sayre, PA  
570-888-9643

**She Likes Milk - Hailey McCluskey**  
23817 CR. 59, Dexter, NY  
www.shelikesmilk.com

## **MUNICIPALITIES**

**Athens Borough**  
2 S. River St., Athens, PA  
570-888-2319

**Athens Township**  
45 Herrick Ave, Sayre, PA  
570-888-2325

**Town of Barton**  
304 Rt. 17C, Waverly, NY  
607-565-2261

**Town of Chemung**  
48 Rotary Rd, Chemung, NY  
607-529-3532

**Litchfield Township**  
RD 1, Sayre, PA  
570-247-2954

**Lockwood**  
304 Rt 17C, Waverly, NY  
607-565-2261

**Ridgebury Township**  
13278 Berwick Tpk, Gillett, PA  
570-596-2731

**Sayre Borough**  
110 W. Packer Ave, Sayre, PA  
570-888-7739

**Sheshequin Township**  
1774 N. Middle Rd., Ulster, PA

**Smithfield Township**  
E. Smithfield, PA  
570-596-2309

**South Waverly Borough**  
2523 Penna. Ave, S. Waverly, PA  
570-888-2125

**Ulster Township**  
24071 Route 220, Ulster, PA  
570-358-3637

**Village of Waverly**  
32 Ithaca St., Waverly, NY  
607-565-8106

## **LOCAL NON-PROFITS**

**Alzheimers Association**  
Franklin Square Station Box 12226  
Syracuse, NY 13218  
(315) 472-4201

**AWYBA**  
PO BOX 435, Athens, PA  
570-867-1121

**BBBS of the Twin Tiers**  
10 Park St Towanda, PA  
570-265-3009

**Bradford County  
Regional Arts Council,**  
Sayre & Towanda Theaters

**Bradford Tioga Head Start**  
5 Riverside Plaza, Blossburg, PA  
570-638-1400

**Community Foundation for the  
Twin Tiers**  
1004 W. Lockhart St., Sayre, PA  
570-888-4759

**Endless Mtn. Pregnancy  
Care Center**  
116 Walnut St., Athens, PA  
570-731-3227

**First Look Pregnancy Center**  
209 W. Lockhart St., Sayre, PA  
570-888-2090

**Futurescapes**  
707 S. Main St., Athens, PA  
717-433-0439

**Futures Community  
Support Services**  
23 Main St., Towanda, PA  
570-265-3800

**NTRPDC**  
312 Main St., Towanda, PA  
570-265-9103

**PA CareerLink/  
Bradford County Action**  
Towanda, PA  
570-265-2171 | 570-265-4434

**Penn York Opportunities**  
101 S. Main St., Athens, PA  
570-888-589

**Red Door/Tioga County Open  
Door Mission**  
359 Broad St., Waverly, NY  
607-249-6062

**Salvation Army of Sayre**  
351 Fulton Street, Sayre, PA  
570-888-2153

## **Sayre Pg. 34**

**Revitalization Initiative**  
www.facebook.com/Revitalize-  
Sayre/about

**The Bridge of Penn-York  
Valley Churches**  
(Helping Hands Furniture)  
Broad St., Waverly, NY  
570-888-8826

**Tioga County Chamber of  
Commerce**  
80 North Ave., Owego, NY  
607-687-2020

**Tioga Point Museum**  
724 S. Main St., Athens, PA  
570-888-7225

**United Way of Bradford County**  
24 Main St., Towanda, PA  
570-247-5569

**Waverly Historical Society**  
PO Box 45, Waverly, NY

## **PLACES OF WORSHIP**

**Ascension Ukranian Catholic**  
108 N Higgins Ave, Sayre, PA  
570-888-2207

**Athens United Methodist**  
118 S. Main St, Athens, PA  
570-888-2241

**Barton United Methodist**  
511 Old Barton Rd, Barton, NY  
607-565-4614

**Calvary Baptist**  
701 W. Pine St, Athens, PA  
570-888-5324

**Catholic Churches of Epiphany**  
Chapel Rd., Ridgebury, PA  
570-596-2109

**Chemung United Methodist**  
5369 Main St, Chemung, NY  
607-259-3321

**Christian Life**  
Broad St., Waverly, NY  
607-565-9777

**Church of the Redeemer**  
201 S. Wilbur Ave., Sayre, PA  
570-888-2270

**Crossroads Family Ministries**  
200 W. Lockhart St., Sayre, PA  
570-888-2347

**Encounter Church**  
85 Freedom Ln, Milan, PA  
570-423-1960

**Epiphany Roman Catholic**  
304 S. Elmer, Sayre, PA  
570-888-9641

**Faith Southern Baptist**  
20 Garfield St., Waverly, NY  
607-565-7040

**First Baptist Church**  
23 Tioga St., Waverly, NY  
607-565-9593

**First Baptist Church**  
221 N. Elmer Ave, Sayre, PA  
570-888-2237

**First Church of God**  
416 Keystone Ave, Sayre, PA  
570-888-9671

**Greater Valley Assembly**  
104 S. Main St, Athens, PA  
570-888-3202

**Jehovah's Witness**  
22 Circle Dr., Waverly, NY  
607-565-8424

**North Waverly, NY Chapel**  
Rt. 34, Waverly, NY  
607-565-9342

**Sayre Christian Church**  
427 S. Keystone, Ave, Sayre, PA  
570-888-2683

**Seventh Day Adventist**  
4981 Wilawana Rd, Sayre, PA  
570-888-1448

**St. James Roman  
Catholic Church**  
503 Clark St., Waverly, NY  
607-565-2014

**St. John's Lutheran**  
207 S. Hopkins, Sayre, PA  
570-888-2412

**Trinity Episcopal**  
701 S. Main St., Athens, PA  
570-88-5715

**Unitarian Universalist**  
112 North St., Athens, PA  
570-88-0252

**United Methodist**  
Rt 220, Milan, PA  
570-888-8276

**Valley Cities Church of Christ**  
701 S. Wilbur Ave., Sayre, PA  
570-886-1838

**Valley United  
Presbyterian Church**  
459 Park Ave, Waverly, NY  
607-565-4034

**Waverly Community  
Methodist Church**  
158 Chemung St., Waverly, NY  
607-565-8650

# LOCAL INDUSTRIES AND BUSINESS TO TAKE CARE OF YOUR HOME

## CLEANING SERVICES/SUPPLIES

### **Class-A Cleaning, LLC**

501 S. Main St., Athens, PA  
570-888-9800

### **JRC Cleaning**

101 Saterlee St., Athens, PA  
570-423-0573

## FARM, LAWN & GARDEN

### **Carcha Farms**

82 Erin Rd., Milan, PA  
570-423-0144

### **Robinson Contracting & Landscaping Pg. 15**

4490 Milan Rd., Milan, PA  
570-596-7100

### **Tioga/Chemung Farm Service Agency/USDA**

109A Chemung St., Waverly, NY  
607-565-2106

### **Tom's Hardware & Feed**

615 Cayuta Ave., Waverly, NY  
607-565-2736

## HOME FASHIONS

### **Chandler's Antique & Artisan Market**

488 N. Keystone Ave., Sayre PA 18840  
570-890-9190

### **Valley Thrift & Consign**

450 N. Keystone Ave., Sayre, PA  
570-890-9203

## HOME REPAIR & BUILDING

### **Cotton's Concrete Pg. 50**

604 Gateway Industrial Park Rd.  
Athens, PA | 570-888-4723

### **Croft Lumber Co.**

101 Spring St., Sayre, PA  
570-888-2364

### **Hal Fish Heating & Air Conditioning**

117 Judge Herrick St., Athens, PA  
570-731-4240

### **Jeff Paul Plumbing & Heating**

800 S. Elmer Ave. Sayre, PA  
570-888-6444

### **Porter's Concrete Service Pg. 33**

88 Porters Simmental Ln., Waverly, NY  
607-565-2452

### **Rynone Kitchen & Bath**

410 Spaulding St. Waverly, NY  
607-565-8125

## INDUSTRY/MANUFACTURING

### **Cabinetworks Group**

100 Lamoka Rd., Sayre, PA  
570-882-8565

### **Chemite, Inc.**

PO Box 271, Waverly, NY  
607-529-3218

### **Expand Pg. 43**

14 Chesapeake Ln. Sayre, PA

### **Leprino Foods**

217 Yanuzzi Dr., Sayre, PA  
570-888-9658

### **RDR Technology - Load Cell Central**

28175 Route 220, Milan, PA  
570-731-7048

### **Transco/ UTC Railcar Repair Services, LLC Pg. 2**

403 N. Thomas Ave., Sayre  
570-888-9623

### **Vulcraft of New York**

621 Main St., Chemung, NY  
607-529-9000

# HEALTH & PAMPERING FOR YOU & YOUR FURRY FRIENDS

## GREAT PLACES TO STAY HEALTHY!

### BEAUTY

#### Bloom Beauty Bar

106 Chemung St., Waverly, NY  
607-218-4280

#### Beauty on the Road

Alissa Merrill | Sayre, PA  
607-857-2316

#### Glow Tanning

1 Garfield St., Waverly, NY  
607-565-2360

#### Stiletto's Hair & Nails

1 Garfield St., Waverly, PA  
607-565-2360

#### U Can Tan Pg. 35

150 Desmond St. Sayre, PA  
570-882-8826

#### Vitality Aesthetics & Wellness

Melissa Cantellops | Waverly, NY  
570-637-8023

### CHIROPRACTORS

#### Horn Family Pg. 34

#### Chiropractic Center

Rt. 220, Athens, PA  
570-882-9009

### FITNESS

#### Best Western Pg. 51

#### Fitness Express

255 Spring St., Sayre, PA  
570-888-7711

#### Impact X Performance Pg. 33

114 Desmond St., Sayre, PA  
570-890-0241

#### Your Better Wellness with Sandra Brewer

Classes at Zen Den, 204 Desmond St., Sayre  
sandrabrewer56@gmail.com

#### Zen Den Yoga & Wellness Center

204 Desmond St., Sayre, PA  
570-886-2069

### HEALTH & WELLNESS

#### Christina Vail Audiology

414 S. Keystone Ave., Sayre, PA  
570-731-7000

#### Endless Mountain Pregnancy Center & Ultrasound Clinic

116 Walnut St., Athens, PA  
570-886-2090

#### Finger Lakes Performance - Alvir Rynone

245 Broad St., Ste. 2, Waverly, NY  
607-260-0577

#### First Look Pregnancy Center

209 W. Lockhart St., Sayre, PA  
570-888-2090

#### Greater Valley EMS

904 N. Lehigh Ave., Sayre, PA  
570-888-6000

#### Guthrie Healthcare Pg. 40

1 Guthrie Square, Sayre, PA  
570-888-5858

#### Robert Packer Hospital Pg. 40

1 Guthrie Square, Sayre, PA  
570-888-6666

#### Sound Vitality

703 S. Elmer Ave., Sayre, PA  
607-426-7423

#### Tower Garden by Juice Plus / My Unique Physique

214-893-1743  
www.Janetsecor.juiceplus.com

### PHARMACY

#### Bert's Pharmacy

144 Desmond St., Sayre, PA  
570-888-2394

#### Waverly Pharmacy

443 Cayuta Ave., Waverly, NY  
607-565-2390

## GREAT PLACES FOR YOUR FURRY FRIENDS!

#### Animal Care Sanctuary Pg. 41

PO Box A, East Smithfield, PA  
570-596-2200

#### Athens Animal Hospital

475 Riverside Dr., Athens, PA  
570-888-2354

#### Doggy Doos Boutique and Barkery

136 W. Lockhart St., Sayre, PA  
570-731-7336

#### Endless Mountain Veterinary Center

507 W. Pine St., Athens, PA  
570-888-8387

## MENTAL HEALTH COUNSELING SERVICES

#### American Psychological Association (APA)

1-800-964-2000 or  
<https://locator.apa.org>

#### Clinical Associates of the Southern Tier

1-607-936-1771 or  
[clinicalassociates.org](http://clinicalassociates.org)

#### Comprehensive Psychiatric Emergency Program

Crisis Hotline 1-800-451-0560  
Family Life Network Counseling  
607-776-4151

#### Mental Health Association of the Southern Tier

1-607-240-7291

#### National Alliance on Mental Illness (NAMI)

Text NAMI to 741741 or call the  
Helpline at 1-800-950-NAMI (6264)

#### National Suicide Prevention Lifeline

1-800-273-TALK (8255) or  
[suicidepreventionlifeline.org/chat/](https://suicidepreventionlifeline.org/chat/)

#### National Child Traumatic Stress Network (NCTSN)

<https://www.nctsn.org/about-us/network-members>

#### Presence Counseling Services

1-315-515-5183

#### PTSD Foundation of America Veterans

Hotline 1-877-PTSD (7873)

#### Rising Hope Community Pg. 13

#### Resilience Consultants

106 Tracy Road, Waverly, NY  
607-738-7458

[risinghopeconsultants.com](http://risinghopeconsultants.com)

[www.risinghopeconsultants.com](http://www.risinghopeconsultants.com)

#### Schuyler County Mental Health Service

1-607-535-8282

#### Southern Tier Counseling Center, LLC

1-607-734-0980

#### Steuben County Community Mental Health Center

1-607-664-2255

#### Substance Abuse and Mental Health Services Administration (SAMHSA)

1-800-662-HELP(4357)

#### Suicide and Crisis Hotline

988



## Your financial partner for life.

Whether you're working towards a savings goal, buying your first home, or looking to invest, we're here to help you every step of the way.

From checking to auto loans, to youth services and a mobile app, we've got what you need to succeed on your financial journey.



**Scan the code** or visit **[visionsfcu.org](https://visionsfcu.org)** to learn more!

**800.242.2120**



Federally insured by NCUA.



## Good neighbors make the difference

Being a good neighbor means being there for my community. As your local State Farm® agent, I'm ready to help whenever you need me. Give me a call.

**Bennett Ins and Fin Svcs Inc**  
Adam Bennett, Agent  
103 S Elmira St Ste 1  
Athens, PA 18810-1127

Bus: 570-886-2494  
[www.adambennettinsurance.com](http://www.adambennettinsurance.com)

Like a good neighbor, State Farm is there.®



State Farm  
Bloomington, IL



### RISING HOPE

COMMUNITY RESILIENCE CONSULTANTS

#### **Rising Hope Community Resilience Consultants LLC**

is a resiliency-focused consulting firm committed to enhancing individual, organizational, and workforce capacities in response to adverse childhood experiences (ACEs). ACEs have been linked to negative life outcomes, including disease, disability, adoption of health-risk behavior, and relationship issues.

Rising Hope offers ACEs awareness presentations, trauma-informed-care training workshops, and individual life-coaching sessions with trauma-support specialists.

All services include a neuroeducation component and integrate evidence-based stress-management strategies that can be directly implemented.

**Dr. Deb Gutierrez, PhD**  
106 Tracy Road, Waverly, NY  
607-738-7458

[Risinghopeconsultants@gmail.com](mailto:Risinghopeconsultants@gmail.com)  
[www.risinghopeconsultants.com](http://www.risinghopeconsultants.com)



# CLARE

PRINTING

570.888.2244

[www.clareprinting.com](http://www.clareprinting.com)

[sales@clareprint.com](mailto:sales@clareprint.com)



## PROVIDING QUALITY, SERVICE & VALUE

### OUR SERVICES

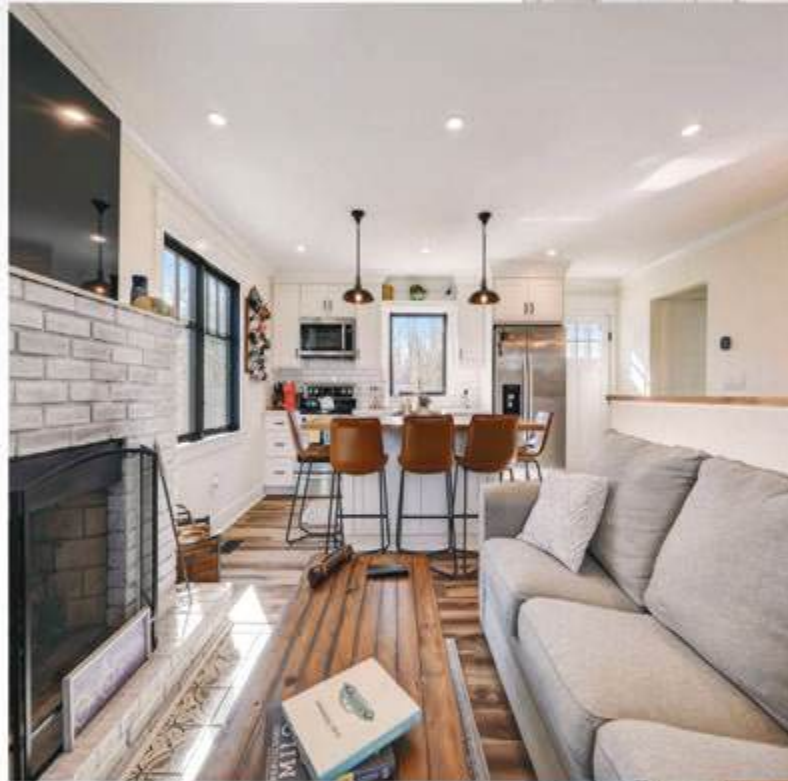
- ✓ BINDERY & FINISHING
- ✓ DESIGN & LAYOUT
- ✓ EDITORIAL & TYPESETTING
- ✓ MAILING SERVICES
- ✓ PUBLICATION MANAGEMENT

### OUR PRODUCTS

- ✓ BUSINESS ESSENTIALS
- ✓ ENGINEERING PRINTS & SCANS
- ✓ MARKETING PRODUCTS
- ✓ SPECIALTY ITEMS
- ✓ SIGNS & DISPLAYS



ARCHITECTURE STUDIO  
DANIEL REINHART, AIA, NCARB  
CANDOR, NY  
607-283-4434



**BUILD YOUR  
DREAM HOME**

**WITH US**  
[www.srarchstudio.com](http://www.srarchstudio.com)



The American Institute of Architects  
NEW YORK - PENNSYLVANIA  
NEW JERSEY - OHIO - FLORIDA



## WILES & MORALES, LLC

CERTIFIED PUBLIC ACCOUNTANTS

HEIDI WILES, CPA • RYAN MORALES, CPA

*~ SERVING OUR MAIN ST. AND TOWNS ~*

### FULL SERVICE ACCOUNTING

Income tax preparation for individuals, businesses, non-profits, estates, trusts, bookkeeping, payroll and tax planning services.

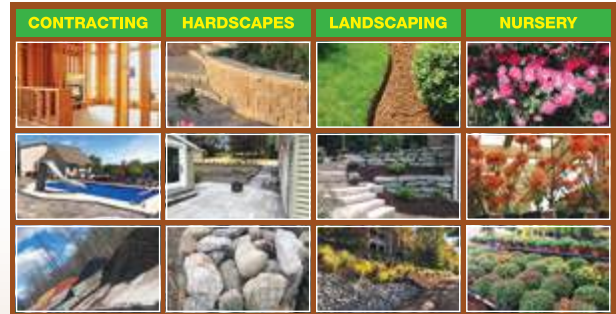
P: 570-890-9500

F: 570-890-9501

228 S. Main Street,  
Athens, PA 18810



- ◆ Design
- ◆ Installation
- ◆ Maintenance



Plants, Trees, Mulch & Stone Bulk, Hardscapes,  
Water Features, Lawn Maintenance

*Creating outdoor living spaces to  
accommodate your lifestyle!*

**4490 Milan Rd. Milan, PA 18831**  
**570-596-7100**

Mallary@robinsonlandscapes@gmail.com  
www.robinsonlandscapes.com

PA State Reg. #PA003911 PA Pesticide License # BU11750

## Trusted.

Tioga State Bank is a **community-minded bank** with strong local roots, the latest products and good people you can talk to. There's no better place than your neighborhood Tioga State Bank for financial guidance through life's milestones.



Helping you **live life!**

tiogabank.com | 888-303-4TSB (4872)

## KEYSTONE CARDS & GAMES

EST. 2021



"Encouraging players to collect and collectors to play!"

Find everything you need to support your trading card game, sports card, and tabletop gaming hobbies.

Join the community at Keystone Cards & Games!

LOCATED IN SAYRE, PA!

Visit our shop online to peruse our inventory of online singles, and check out our calendar of events.



515 S Keystone Ave.  
Sayre, PA 18840

SCAN THE CODE  
FOR MORE  
INFORMATION!



WWW.KEYSTONECARDSANDGAMES.COM



# FREEDOM

## FINANCIAL INSURANCE

833-670-0306      info@freedominsurance.life  
119 West Packer Ave, Suite 3, Sayre, PA 18840

**Freedom Financial Insurance, providing the answer for your insurance needs. Serving individuals and businesses alike, our agents customize coverage to meet your specific needs and goals.**

**Offering expertise in these areas:**

- Medicare
- Life Insurance and Group Life
- Health Insurance and Group Health
- Disability Insurance
- Long Term Care Insurance
- Final Expense Insurance
- Group Benefit Plans
- Fixed Annuities and MYGAs



## Friendship Star Quilt Shop

131 Center St. Sayre, PA 18840

**Largest quilt shop in the area featuring:**

- Over 3,000 bolts of premium cotton fabric
- Thousands of notions
- Needle art supplies
- Retailer of Janome & Elna Sewing Machines
- Service & repair machines
- Online store option
- A Valley fixture for over 12 years

## **Friendship Star Quilt Shop**

131 Center St. Sayre, PA 18840

**Where friendship meet one stitch at a time.**

**Hours.: M-F 10-5 & Sat 10-1**



**Shop online 24/7 at [www.friendshipstarquiltshop.com](http://www.friendshipstarquiltshop.com)**



*We Put the Unity in Community*  
myfccb.com | (800) 326-9486

1778 Elmira St.  
Sayre, PA 18840-9250

306 W. Lockhart St.  
Sayre, PA 18840

Commercial Coverage  Benefits  Personal Insurance

## Securing What Matters Most, Together.

Whether it's your home, business, or loved ones, our commitment is to work with you to protect what matters most.

### Why Gannon Associates Insurance?



Right Coverage,  
Right Price



Personalized  
Service



Loss Control  
Services



### Contact Us

844-GANNONS  
learnmore@gannonassociates.com  
GannonAssociates.com



**Natural Gas Distributor**  
**www.valley-energy.com**

**523 S. Keystone Ave.**  
**Sayre, PA 18840**  
**570-888-9664**

**EMERGENCY  
CALL  
1.800.998.4427**



**We offer a variety of printing products and services.**

- Full-color/black & white
- Custom printing
- Document finishing
- Posters & banners



**THE UPS STORE®**

**Hours: M-F 7:30 am - 6:00 pm**  
**Saturday 8:00 am - 2:00 pm**  
**Sunday CLOSED**

**1766 Elmira St. (Across from Wendy's)**  
**Sayre, PA 18840**  
**Phone 570.888.7447 • Fax 570.888.0716**

The UPS Store® locations are independently owned and operated by franchisees of The UPS Store, Inc. in the USA and by its master licensee and its franchisees in Canada. Products, services, pricing and hours of operation may vary by location. Copyright © 2022 The UPS Store, Inc. All rights reserved. 21040110122



**Chart Your  
Course.**

**We'll help  
you get there.**

## **Opening New Doors For Your Family.**

Whether you need a loan to purchase your new home, make renovations, or build your dream home, we'll make sure to get you there.

**Apply online or contact Lenora Phillips,  
NMLS #973187, (607) 215.5510, [lphillips@chemungcanal.com](mailto:lphillips@chemungcanal.com)**

Member  
**FDIC**



**Chemung Canal  
Trust Company**

**[chemungcanal.com](http://chemungcanal.com)**

# LOCAL AFFORDABLE Career-Focused

*Lackawanna College Towanda Center provides high-quality education for students located in Bradford and Sullivan counties and beyond. Students can earn their complete degree in Towanda for many majors.*



## Bachelor's Degrees

- ✓ Business
- ✓ Criminal Justice
- ✓ Human Services
- ✓ RN-to-BSN

## Associate Degrees

- ✓ Accounting
- ✓ Business Administration
- ✓ Cyber Security
- ✓ Human Services
- ✓ Pre-Allied Health
- ✓ Professional Studies
- ✓ Surgical Technology

## Certificate Programs

- ✓ Medical Assistant
- ✓ Phlebotomy Technician
- ✓ Conservation & Natural Resource

### ***Earn credits with our Pre-College Programs***

Lackawanna College allows local high school students to gain a head start on their college career through a number of programs.

Call to find out more!

### **Contact Us Today!**

- ☎ 570-265-3449
- 🌐 [www.lackawanna.edu](http://www.lackawanna.edu)
- 📍 1024 South Main Street  
Towanda, PA 18848

**Lackawanna  
COLLEGE**

**TOWANDA  
CENTER**

**Local Lending  
Made Easy  
For You**

Visit us in  
Sayre



**Tom Hendershot**

Vice President & Commercial Loan Officer

NMLS# 582798



205 W. Lockhart St., Sayre  
570-888-9850 | [PSBanking.com](http://PSBanking.com)



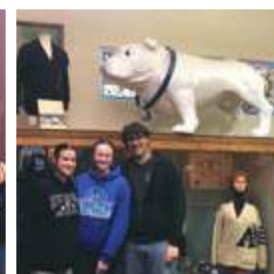
**570.888.6531**

875 Rt. 199, ATHENS, PA



# Radigan media





### Athens Area School District

Nestled in the Endless Mountains of northeastern Pennsylvania, Athens boasts a strong tradition of academic and personal development. Throughout the district, students are offered the luxury of career electives, Advanced Placement courses, and dual credit courses.

Participating in District 4 Athletics, Athens has a winning tradition which has produced numerous league, district, and state champions proud to call themselves Wildcats.

Activities at Athens are not limited to athletics, students also participate in a wide variety of extracurricular activities to help them develop into well-rounded, successful students.

The Athens Wildcats, with distinctive black and silver, strive to present a positive image for our schools and their communities in all their endeavors.



### Sayre Area High School

Located in the Susquehanna Valley, is a school of about 500 students enrolled in grades seven through twelve, more commonly known as the little school with a big heart. Since its beginning in the era of the Lehigh Valley Railroad to the transition to a community, Sayre Area High School has traditionally been an important institution in the community. This is demonstrated annually by giving to charity organizations in the valley, such as, the Salvation Army's canned food drive, which receives Sayre High's donations of thousands of items annually.

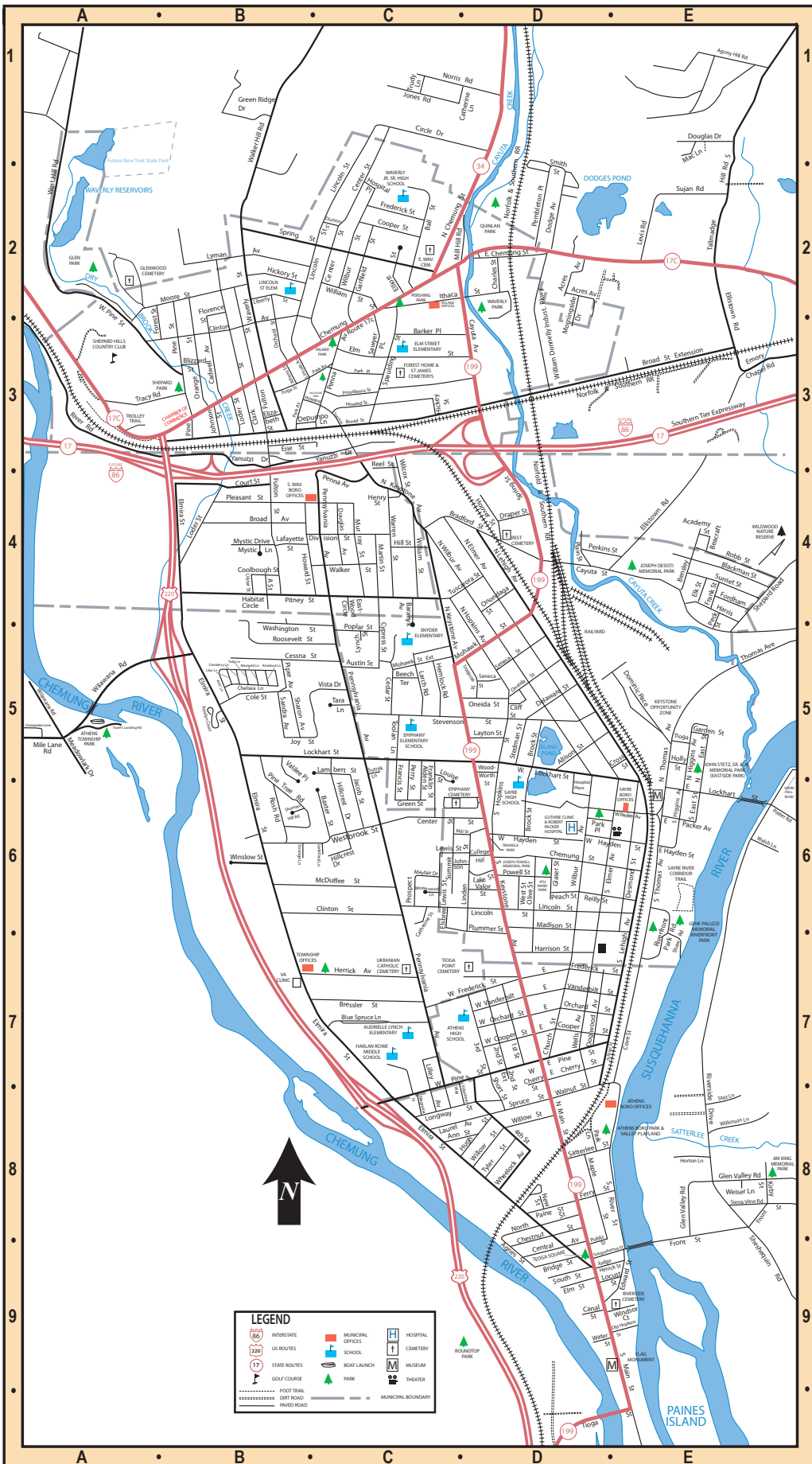
Sayre students are involved in a variety of activities including athletics, music, art, forensics and drama and participate in community service programs through clubs at the school. The school district has played a key role in readying the youth of the Sayre area with the skills, values and knowledge needed to be responsible citizens of today's world. Our students, faculty and staff always have and will continue to do their best at everything they do and make us Sayre Proud.



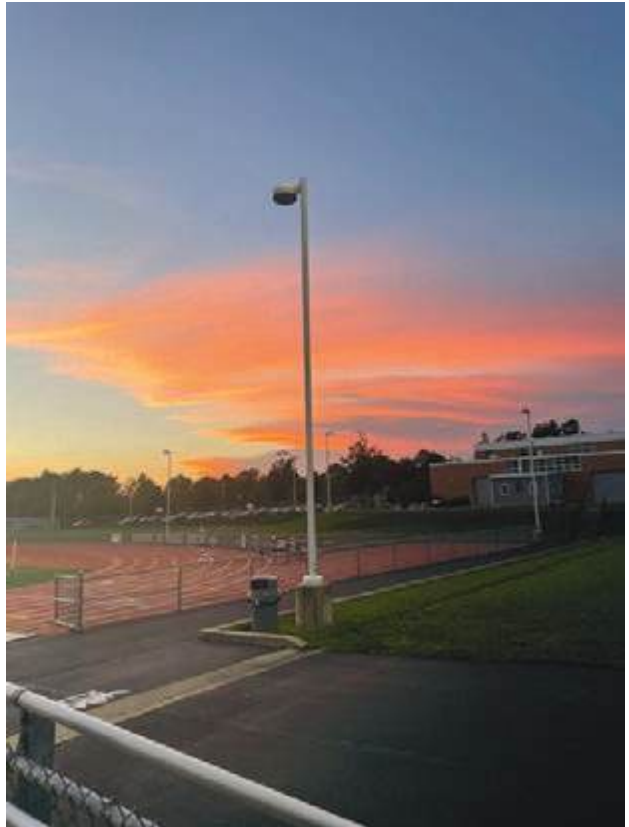
### Waverly Central School District

Provides a high-quality, well-rounded education for all students. We offer many unique learning programs such as work-based learning opportunities through our Career Center, an Agricultural Science program where students grow and sell plants at local markets, and a Technology and Fabrication program that allows students to design and build a race car for a national competition in Watkins Glen. We also offer dual enrollment college courses through the Corning Community College and the Tompkins Cortland Community College. Alongside our academic programs, students participate in a variety of academic competitions including Quiz League, and the FCCB Scholarship Challenge. Our extensive fine arts program includes digital art, photography, ceramics, drawing and painting as well as both instrumental and vocal programs that are among the best of our region. Leadership and team building are built within our students through organizations such as FBLA, FFA, Leadership Crew, and Student Council. Our athletic programs are diverse and successful with strong participation in every season. Many students excel in multiple sports, demonstrating a high level of commitment and school spirit. With a student body that is highly engaged in extracurricular activities, athletics, and advanced academic opportunities, the Waverly Central School District provides a dynamic and enriching environment for all students to grow and succeed.





# VALLEY MAP



# ATHENS BOROUGH & TOWNSHIP

# ATHENS BOROUGH & TOWNSHIP

Athens has had many names throughout the recorded history of this geographical area. Before white settlers arrived in the Tioga Point area, The Haudenosaunee held the southern gateway to the Iroquois nations. Diahoga was the name known during the precolonial area and the Revolutionary War periods. In 1778 John Secord was the first white settler, and in the following year General John Sullivan would make Tioga Point his base of operations for the campaign against the local Indigenous peoples. With settlers from Connecticut returning after the Revolutionary War, their descendants helped develop a thriving community, growing the canals, railroad, and bridge work industries creating a flourishing service community continuing into the modern era. Athens Township officially received its charter and was formed in 1797. Athens Borough was incorporated in 1831. For more information about the history of Tioga Point and Athens, visit the Tioga Point Museum at 724 S. Main Street in Athens, PA.



**ABA Promotes our local business & community.**

**Our passion is to grow & build connections.**



**Staggering Unicorn Winery**

Staggering Unicorn Winery  
314 S. Main St.  
Athens, PA 18810  
staggeringunicorn.com  
570-888-7070

Discover our charming small-batch, family-owned winery, where we specialize in delightful sweet fruit wines made without grapes. Our cozy tasting room invites you to relax with friends while savoring a glass of our unique wines, all while enjoying your favorite snacks or meals. Plus, for those looking for a private gathering space, we offer a rental room starting at just \$175! Come unwind and experience the joy of fruit wine with us.





# SAYRE & SOUTH WAVERLY BOROUGH

# SAYRE BOROUGH

---

Sayre was born in the mind of Howard Elmer, a 36-year-old Waverly, NY bank president, who was born in Orange County, NY and died in South Bethlehem, PA and never lived a day in Sayre in his life. In 1869, Howard Elmer, the founder and president of the Waverly First National Bank, saw the possibilities in the plains between Athens and his home community for the establishment of a town. He persuaded his brother Richard Elmer, a New York City capitalist, Charles Anthony; and a Waverly man by the name of James Fritcher in 1870 to join him in purchasing 321 acres of what farmers had referred to as poor farmland: the Morley, Hopkins and William Thomas farms in an area south of Waverly called Pine Plains. Without letting grass grow underneath his feet, he started construction of an 80-foot-wide thoroughfare from Bradford Street to what is now W. Lockhart Street, which he called Keystone Avenue. The street ran through the above-mentioned farms and cost \$3,000.

During the winter of 1870-71, Elmer was forced to quickly revise the original location of his community when he saw that the proposed town should be located near the terminus of two railroads: the Southern Central and the Geneva, Ithaca and Athens Railroads. Elmer accomplished this through the purchase of 417 more acres of plains, through the Leggett, Harris and Hayden properties and more of Thomas' land. With \$140,000 they had purchased 738 acres, including the area surrounding the two railroads — about halfway between Athens and Waverly. LVRR Boosted Sayre's growth. Historians tell us that Elmer was assured when he sank \$140,000 into poor farmland, "dense growths of pitch pine and scrub oak timber," that the railroad would move its repair work from modest Waverly to the new location.

What Elmer was "banking" on was the successful merger and hook-up of the smaller New York based roads with Asa Packer's Lehigh Valley Railroad (originally the Pennsylvania and New York Canal and Railroad Company). That section of the Lehigh Valley had already linked up with the Erie Railroad at Waverly (in 1869) and talks were underway to bring the Geneva, Ithaca and Athens (soon to be Sayre) and Southern Central railroads into Packer's Lehigh "family." Pennsylvania's anthracite coal was the real impetus for the expansion, as Asa Packer constantly sought to stretch the tracks farther and farther away from his home base in Mauch Chunk, PA. When he was ready to use land to build shops and a round house, he naturally turned to Howard Elmer, who had been a part of the merger talks for the past two years.

# SOUTH WAVERLY BOROUGH

---

The settlement of the Valley and South Waverly began shortly after the war, but, as early as 1786. In 1786-87, the New York / Pennsylvania State line was established as being the southern boundary of South Waverly Borough. John Swift, a veteran of the Sullivan-Clinton campaign, was one of the first settlers in South Waverly at the east slope of Spanish Hill and along the west side of what is now known as Elmira Street.

South Waverly's first roads were Elmira and Bradford Streets, the latter being a connection from Milltown to Elmira Street. By 1850, portions of Fulton and Loder Streets were built as a result of extensions south from Waverly N.Y.

The Borough of South Waverly was incorporated on January 28, 1878. At the time, South Waverly had been an outgrowth of Waverly, N.Y. in what was known as "Factoryville" due to the existing grist and fulling mills along Cayuta Creek. The communities of Waverly N.Y. and South Waverly P.A. have had close ties to each other ever since the communities were incorporated in each state. For many years, South Waverly Borough received fire protection, mail service and city water from Waverly, N.Y.

In 1878, the D.L. & W. Railroad began serving this area and the street railway system followed around 1905. The railroad industry became an integral part of South Waverly's History in 1890 as the John H. Murray Coal Company established its business within the limits of the borough. The DL Railroad Water Tower was located in South Waverly near the

In 1871, Packer purchased 69 of the 738 acres owned by Elmer and his partners — and the boom was on! Street grading began in 1872, with the clearing of land, and the planting of trees near the sides of the streets-to-be. Lehigh Avenue was located and graded in 1873. In that same year, the first depot — dubbed the "Cow pasture Station" — was built.

The Waverly newspaper in 1873, "The Advocate" published a statement concerning the infant community: "Southern Central Junction is a station halfway between Waverly and Athens, Pennsylvania, at the junction of Ithaca and Athens and the Southern Central railroads with the Lehigh Valley. Previous to last Monday it had not been used as a passenger station. Owing to the enterprise of Howard Elmer, a passenger station has been erected at this point and the Ithaca and Athens trains will terminate here instead of Athens. A restaurant will soon be opened. Robert Sayre's namesake. According to local "legend," recorded by Mrs. J. W. Bishop in 1912: "Mr. Elmer took a party of railroad men to the hillside about where the reservoir now is to give them a view of the situation. All were greatly impressed by the beauty and extent of the plains and Robert H. Sayre, president of the Pennsylvania and New York Railroad Company and superintendent of the Lehigh Valley, exclaimed: "What a magnificent location for a great city!" "Mr. Sayre's judgment was considered valuable and Mr. Elmer said:" "If that is your opinion, Mr. Sayre, we will build a town and call it by your name, which was done at that time." Asa Packer had appointed Sayre as engineer in charge of location and construction of the original line in 1852. Until his retirement in 1898, he remained in charge of the various extensions of the system.

According to records, 278 "freeholders" residing in an area between South Waverly and Athens Pennsylvania, signed a petition asking that Sayre be recognized as a borough. That petition was presented to and heard by a grand jury September 3, 1890. Pine Plains, the area we now call Sayre, was officially described as that land bound by a line beginning on "the boundary line between the States of New York and Pennsylvania, on the East bank of said Cayuta Creek and following on down the East bank of said creek the several courses and distances thereof to the Susquehanna River..." on its east side. The Town of Sayre was decreed to be "The Borough of Sayre," in "corporate style and title thereof." And, with signature of Judge Sittser affixed, as of January 27, 1891, Sayre was officially official.

(This was originally written by Clara Costen for the Evening Times Centennial edition in 1991 it was copied and edited by Henry G. Farley in 2010.)

John H. Murray Coal Company. The Murray Company was established in 1890 and is still in operation today.

The Borough of South Waverly was once serviced by trolley lines and later by the Valley Bus Service that also stretched into Waverly, N.Y., Sayre and Athens. South Waverly prided itself on providing corner stores, fruit stands and ice cream shops. It is also noted that many businesses were not located on a traditional Main Street or Central Business District, but within single family homes.

The first school in South Waverly was built around 1884 for 8 grades; it was a two-story building. In 1888, two additional years of classes were added. Students wishing to complete 4 years of high school would go to the Waverly, Sayre or Athens Schools. The two-year high school closed in 1943. In 1957, this changed again as the school housed grades kindergarten through 6th grade. South Waverly then joined the Sayre School District in 1951 after a devastating fire destroyed the school in 1947.

In most recent borough history, in 1996, the borough formed the South Waverly Municipal Authority. South Waverly has evolved into a residential-bedroom community within the "Valley" region. Business amenities have also developed on the eastern edge of the borough abutting Sayre Borough and industrial uses, such as Leprino Foods.



# VILLAGE OF WAVERLY & TOWN OF BARTON

# VILLAGE OF WAVERLY

Waverly is the largest village in Tioga County, New York and was previously a regular stop on the Black Diamond Express passenger service. This territory was first inhabited by Native Americans who used its strategic location, the merging of two rivers, for travel and trade. The village was incorporated as part of the town of Barton officially in 1854 when Joseph Hallett named the town after his novel Waverley by Sir Walter Scott. In the 19th century Waverly had been an important railroad junction when the development of the Lehigh Valley Railroad reached the area in 1869. The development of the railroad and coal railroads significantly contributed to the flourishing of Waverly, included in this was also the development of several factories throughout the village such as Hall-Lyons furniture factory and the Manoil Manufacturing Co. According to the 2010 census, Waverly has a population of approximately 4,444, which contributes to the regions combined population of 30,000.

# TOWN OF BARTON

Barton was formed on March 23, 1824 and is nestled between two rivers, the Susquehanna River and the Chemung River. The town lies in the southwestern corner of Tioga County and is bounded on the north by the Town of Spencer, east by the Towns of Tioga and Nichols, south by the New York/Pennsylvania border, and on the west by Chemung County.

Barton was incorporated in 1854, which includes the Village of Waverly, hamlets of Barton and Lockwood, and part of Halsey Valley. The origin of the name "Barton" is vague. In an early dictionary, the word barton was defined in part as "the domain lands of a manor." Since no prominent person by the name of Barton ever lived or owned property in Barton when it was surveyed, it is reasonable conjecture that the word, "barton" (meaning manor) was written on an early map and filed in Albany. When the map was examined and the only name found on it was "Barton", that was the name given to the town.

Most of the early settlers came from New York, Connecticut or Pennsylvania. One of the earliest and most prominent was John Shepard. In 1796, he bought 1,000 acres which covered all the land on which the Village of Waverly now stands. Others living in Barton before 1795 operated farms and sawmills. Businesses in the nineteenth century included Novelty Furniture Works, the Butter and Oyster Pail Manufactory, and Sayre Butter Package Company. There were grist and flouring mills, saw mills, creameries, wagon and blacksmith shops. The first church erected in the Town of Barton, in 1833, was the Emory Chapel and was named after John Emory, a Methodist Bishop. It is the second oldest church in Tioga County and still stands on a pretty little knoll guarding the graves of many of their early settlers. Social life in the town was provided by the North Barton Grange #45, the first grange in Tioga County which was established on January 2, 1874. Barton Community Club was incorporated on November 29, 1946, with the purpose of maintaining and fostering interest in civic, social, and community affairs.

The Town Municipal Offices have been located at 304 Route 17C, Waverly, NY, since December 1982 in the old Ellistown "Little Red School House".

## WAVERLY BUSINESS ASSOCIATION

### MISSION STATEMENT

The Waverly Business Association (WBA) is a non-profit organization which supports and helps to Enhance Local Business, Community Development and Relationships.

### The WBA Benefits

- Assist with **Marketing & Promotion** for local business
- Provides **Advice** and **Support** for local business
- Promotes **"Business-to-Business"** networking
- Member **Representation** with our local government
- Supports **Tourism** through marketing & promotion
- Seeks to **Enhance** the **Lives** of those in our community



discoverwaverly.com  
marketing@discoverwaverly.com

Join us for our Monthly Meetings  
(find place/time at  
[www.facebook.com/  
WaverlyBusinessAssociation](http://www.facebook.com/WaverlyBusinessAssociation)) 

**Help keep our Business Community vital & growing**



# Features

- ✓ Premium bedding with soft and firm pillows
- ✓ Hearty & healthy breakfast
- ✓ Fast & free Wi-Fi
- ✓ Raio® premium bath amenities
- ✓ In-room recharge station
- ✓ Express check-out
- ✓ Fitness center & pool
- ✓ Conference Room
- ✓ 50+ Free Premium channels

**Comfort Inn & Suites**  
2160 Elmira Street Sayre, PA 18840  
570-888-1100 or gm.pa697@gmail.com

**Your New All-in-One Training Solution for a Healthier & Happier Life!**

- 1 PRIVATE TRAINING
- 2 GROUP X
- 3 RECOVERY
- 4 SUCCESS COACHING

Discover the personalized holistic health plan for you to reach your exact goals at an exact date!

**RESULTS GUARANTEED**

**IMPACT-X PERFORMANCE**

**NOW OPEN!**

SCAN ME



impactxperformance.com  
114 Desmond St, Sayre PA  
Sayre, PA  
Horseheads, NY  
Corning, NY  
Ithaca, NY



**Porter's Concrete Service, Inc.**

**88 Porters Simmental Lane  
Waverly, NY 14892**

**Phone: 607-565-2452**

**www.portersconcreteservice.com**

**NOW HIRING CDL DRIVERS**



**TEAM TIOGA**  
we work for you

**ARE YOU INTERESTED IN STARTING A BUSINESS OR EXPANDING YOUR EXISTING BUSINESS IN TIOGA COUNTY?**

The staff at TEAM Tioga is available for one-on-one meetings with start-up and existing business owners to provide and explain available resources, funding, and contacts to help secure and grow your business. Be sure to contact our office today!

USDA is an equal opportunity provider, employer, and lender.

607.687.8255 | TEAMINFO@CO.TIOGA.NY.US | WWW.TIOGACOUNTYNY.COM | 56 MAIN ST. OWEGO NY 13827

**\$2.7 MILLION**  
DOLLARS HAVE BEEN LENT  
TO TIOGA COUNTY BUSINESSES


**2 LOAN PROGRAMS**  
DESIGNED TO FIT YOUR NEEDS

**WE WORK WITH  
YOUR BANK**

**\$2,500—\$100,000**  
**LOW INTEREST LOANS**  
ARE AVAILABLE TO YOUR FOR-PROFIT BUSINESS




*Kurt's*  
**MAKING WHOOPIE!**  
Made by Hand From Scratch  
570.888.9102  
[www.kurtsmakingwhoopie.com](http://www.kurtsmakingwhoopie.com)




**Horn** FAMILY  
CHIROPRACTIC

Dr. Tom Horn  
Dr. Nate Callear  
Dr. Trey Hildebrandt

Find us on:  
**facebook**

Route 220 in Athens, PA  
(570) 882-9009

To Learn More, Visit Us Online at  
**[www.HornFamilyChiro.com](http://www.HornFamilyChiro.com)**

- **Advanced Chiropractic Care** – For all ages
- **Non-Surgical Spinal Decompression** – Specifically for treating bulging/herniated discs, sciatica, chronic back/neck pain, headaches and degenerative arthritis
- **Laser Therapy and Radial Pulse Wave** – Non-invasive treatments used for pain relief and tissue healing
- **Non-Surgical Knee Decompression** – Chronic/post-surgical knee pain
- **Digital X-rays** – Safer, faster and clearer imaging
- **Comprehensive Nutritional Evaluations** – Specializing in gut health, weight loss and metabolic challenges

**A Team Approach...  
to Get YOU Better, Faster!**

**Dedicated to Helping Our Community Grow**



**SBA**  
SAYRE BUSINESS ASSOCIATION



**By Working Together, We Can Accomplish So Much More**

**Sayre Revitalization INITIATIVE**



*We Are Working to Establish Sayre as a Regional Hub for Recreation, Education, Hospitality, and Wellness*

Join the Initiative!  
Email: [Chris@cbprogress.org](mailto:Chris@cbprogress.org)

Donate Today!  
  
venmo

**FRIENDS OF SAYRE PUBLIC ART**





METAPHYSICAL  
ITEMS

BOOKS  
AND MORE!

LARGE  
SELECTION  
OF  
CRYSTALS

TAROT

## Awareness Intuitive

— STUDIO —

WITH PSYCHIC MEDIUM DAWN KRUG

INTUITIVE  
READINGS

MEDIUMSHIP

AMETHYST  
BIO MAT  
SESSIONS



570-886-2008

154 DESMOND ST. • DOWNTOWN SAYRE, PA 18840

150 Desmond St. • Downtown Sayre, PA 18840

570-882-8826

17  
Tanning  
Units

Red Light  
Therapy



Spray  
Tanning



Clothing,  
Jewelry  
&  
more!

Teeth  
Whitening



# UCAN CAN

— WHEN THE BEACH IS OUT OF REACH —



**Fully trained staff to help you with all your tanning needs!**

# Mad Hatter Café and Tea Garden



Home of  
Mad Zack's  
Authentic Ramen

400 N. MAIN ST. ATHENS, PA  
570-731-7183

FRESH BOWLS – PANINI  
ESPRESSO DRINKS  
BAKED GOODS

LOCAL GOODS AND MORE

OPEN 11 AM TO 6 PM TUES.-FRI.

*Always Fresh - Always Fun  
The Mad Hatter*



## A'La Carte Decor LLC

EVENT OUTFITTERS

Decor rentals, event design, signage, stationery & more!

Rent our storefront for your next small event!

Located in downtown Athens, PA.   

[WWW.ALACARTEDECOR.COM](http://WWW.ALACARTEDECOR.COM)



Your trusted partner for all things financial—Ingersoll Rand Federal Credit Union!  
Offering competitive rates, personalized service, and tools to help you achieve your goals.

1970 Elmira Street, Sayre

570-888-7121

[ingersollrandfcu.com](http://ingersollrandfcu.com)

Federally Insured by NCUA



# MEYER'S RV

## THE GREATER VALLEY'S NEWEST RV & MARINE DEALER



**Meyer's RV & Marine**  
209 Spring St., Sayre, PA 18840

**888.885.2829**

### SELLING THE MOST POPULAR BRANDS IN THE COUNTRY



### NORTHEAST'S LARGEST FAMILY OWNED DEALER NETWORK

SAYRE, PA • MT. MORRIS, PA • MADISON, OH • APOLLO, PA • HARRISBURG, PA • ALBANY, NY  
• ROCHESTER, NY • FARMINGTON, NY • BATH, NY • SYRACUSE, NY • WEBSTER, NY  
• BRANCHVILLE, NJ • JOPPA, MD • RIPLEY, WV



**M&T Bank.** Understanding what's important.

**Tierani Auman**

**Sayre Branch Manager**

**230 Desmond Street, Sayre PA**

**(570) 888-2284 | [tauman@mtb.com](mailto:tauman@mtb.com)**



Equal Housing Lender. ©2023 M&T Bank. Member FDIC.

At M&T Bank, understanding what's important means realizing the role a bank plays in people's lives. And then living up to those responsibilities, by helping families, businesses and communities thrive. It's what we've been doing for more than 160 years.

[Learn more at mtb.com.](https://www.mtb.com)

**M&T Bank**



**DO YOU KNOW WHAT WE DO?**

**Bloomsburg | Corning | Elmira | Philadelphia | Pittsburgh | Sayre | Towanda | Williamsport**

**Serving the needs of businesses, families and individuals with quality, value and personal advice.**

**Consider it DUNN!**



**COMMERCIAL INSURANCE**

Property, Workers Comp, Auto, national Landscape, General Liability, Excess Liability, Schools & Municipalities



**REAL ESTATE**

Commercial & Residential Sales, Market Analyst & Appraisal Services, Relocation Facilitation



**BENEFITS**

Health/Vision/Dental, Life/Disability, Voluntary Benefits, Pensions, Spending Accounts, Alternative Services & Products



**RETIREMENT PLANNING**

Individual Financial Services & Plan Level Services

Securities and Advisory Services offered through Cadaret Grant & Co., Inc. a Registered Investment Advisor, and Member FINRA/SIPC. Swan & Sons - Morss Company, Swan Morss Insurance, The Dunn Group and Cadaret Grant & Co., Inc. are separate entities.



**PERSONAL INSURANCE**

Auto, Home, RV's, Boats, ATV's, Flood, Life, Disability, Retirement



[www.linkedin.com/company/thedunngroup](https://www.linkedin.com/company/thedunngroup)



[www.facebook.com/TheDunnGroupInsurance](https://www.facebook.com/TheDunnGroupInsurance)



[twitter.com/TDG\\_Insurance](https://twitter.com/TDG_Insurance)

**CALL US: 844-386-6477**



[thedunngroup.com](https://www.thedunngroup.com)

**Customer Satisfaction is #1**



200 Spring St. • Sayre, PA 18840  
570-888-2135 • [www.FerrarioNissan.com](http://www.FerrarioNissan.com)

**Jim Bronson, General Manager**  
607-742-9946 • [jbronson@ferrario.com](mailto:jbronson@ferrario.com)



**912 N. Wilbur Avenue  
Sayre, PA**

**f /samsbarsayre**

Mon.-Thurs., Sat. 11am-2am,  
Fri. 7am-2am, Sun. 12pm-2am

## **SPECIALTY PIZZAS**



Taco • Chicken Bacon Ranch • Buffalo Chicken  
Chicken & Broccoli/Garlic • Meatball • Garlic  
Cheeseburger • Breakfast • Meat Lovers • Meatsauce  
Pepperoni • Flatbread Personal Pizzas • Cheese



**Wings and Boneless Wings  
Burgers • Build Your Own Burger  
Cheesesteaks, Beef or Chicken  
Sausage and Meatball Hoagies  
Salads • Hot Pretzels**

**Hot Ham and Cheese Sandwiches**

**We also have a great  
breakfast menu!**

**Don't forget our live entertainment  
and 16 Beers on tap!**



# Personalized Care for You

Unlock a healthier you with personalized care designed to fit your lifestyle. Guthrie Primary Care offers convenient and accessible services that cater to all of your needs. We offer in-person and virtual visits so you can connect with us from anywhere, making it easier than ever to prioritize your well-being.

**Take charge of your health today.**

To schedule an appointment with Guthrie Primary Care, scan the QR code, visit us online at [www.Guthrie.org](http://www.Guthrie.org) or call **866-GUTHRIE** (866-488-4743).





## SOLUTIONS FOR EVERY BUSINESS

From contactless payments to in-depth sales tracking, C&N's partnership with Clover® offers business owners an all-in-one POS system that simplifies your day-to-day while providing valuable insights for growth. Visit us online or stop at your local C&N office to learn more. **You&US. That's C&N.**

### ATHENS

428 South Main Street  
570.888.2291

### SAYRE

41827 Elmira Street  
570.888.2220



BANKING  
LENDING  
WEALTH MANAGEMENT

cnbankpa.com 1.877.838.2517



**ADOPT  
FOSTER  
VOLUNTEER  
DONATE**



## Call for Our New Grooming & Low-Cost Vet Clinic Services!



353 Sanctuary Hill Lane  
East Smithfield, PA 18817

**570-596-2200**

[AnimalCareSanctuary.org](http://AnimalCareSanctuary.org)



## Together we can...

**Believe in Our Community  
Be Kind ▪ Treat People Right  
Do Great Things.**

**Kimberly Mastrantonio  
2 RIVERS INSURANCE LLC  
120 SUSQUEHANNA ST.  
ATHENS, PA 18810  
[kim@2riversins.com](mailto:kim@2riversins.com)  
5708882669**

Erie Insurance Exchange, Erie Insurance Co., Erie Insurance Property & Casualty Co., Flagship City Insurance Co. and Erie Family Life Insurance Co. (Erie, PA) or Erie Insurance Co. of New York (Rochester, NY). Go to [erieinsurance.com](http://erieinsurance.com) for company licensure and product details.  
CMS149\_comun1 2/18



**Erie  
Insurance**

Above all in SERVICE® - since 1925



**227 BROAD STREET  
WAVERLY NY**

**607.565.2111**

**HOURS:**

**SUN - THURS: 8A-9P**

**FRI - SAT: 8A-10P**



- **DINE-IN • TAKE OUT**
- **DELIVERY**
- **CATERING LARGE OR SMALL EVENTS**
- **FOOD TRUCK**

*WE OFFER WEEKLY SPECIALS  
MILITARY & SENIOR DISCOUNT*



Local delivery to valley & surrounding areas  
including parts of Lockwood & Chemung

# INGHAM'S AUCTION SERVICE



**BOB  
CONNIE  
DANNIE  
AMY  
AUSTIN**

**LIVE OR ONLINE  
AUCTIONS**

- APPRAISALS
- BUSINESS LIQUIDATIONS
- ESTATES • ANTIQUES
- FARM • MACHINERY
- EQUIPMENT

**ROUTE 34 - LOCKWOOD - NY  
PA LIC. AU005645**

**DONNIEINGHAMAUCTIONS.HIBID.COM**

607.426.5188 / 607.222.1575 / 607.598.2368

donnieinghamauctions@gmail.com



Robert Ingham, Auctioneer  
Donnie Ingham, Auctioneer

Austin Ingham, Auctioneer  
EST 1980

Estates Antiques Farm	Liquidations Equipment Machinery
-----------------------------	--

Licensed ~ Bonded ~ Insured  
Live or online auctions at your place or ours.

DonnieInghamAuctions.hibid.com  
607-426-5188  
1533 State Route 34, PO Box 55, Lockwood, NY



## **Expand Energy is the largest independent natural gas producer in the U.S.**

Established through the combination of Chesapeake Energy and Southwestern Energy, we are committed to expanding America's energy reach to fuel a more affordable, reliable, lower carbon future.

Visit [expandenergy.com](https://expandenergy.com) to learn more.

**expand**

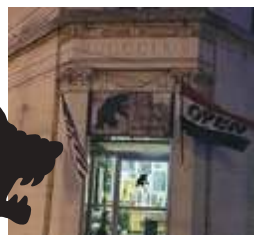
Hot Coffee • Cold Brew • Specialty Iced Coffees • Nitro • Cold Brew • Bubble Teas • Lemonades •  
Smoothies • Milkshakes • Coffee Floats • Cappuccinos  
Breakfast and Lunch Bagels • Waffle Sandwiches • Wraps • Flatbreads •  
Hot Pretzels • Fruit Cups • Pup Cups

**Delivery Available  
M-F 9:00am-1pm!**



THE  
GRUMPY GRIZZLY

241 BROAD STREET  
WAVERLY, NY



Find us  
On  
Facebook!

**Gift Shop  
Open  
Mon-Sat  
9am-1pm  
241 Broad St.**



**Coffee &  
Bagel Shop  
Open  
Mon-Fri  
6am-2pm  
Saturday  
8am-1pm  
245 Broad St.**

COFFEE, BAGELS AND CUSTOM DECOR



**STRIKE SHACK TIKI BAR  
OPEN MAY TO SEPTEMBER**



**Valley Bowling Center**

13 N. Chemung Street  
Waverly, NY  
607-565-9946

Call About Open Bowling, Birthday Parties, Rock -n- Bowl, and  
Pizza, Pop, & Pin Specials



## Compassionate & Professional Funeral Planning Services

**FUNERAL SERVICES/ CREMATION SERVICES / MILITARY HONORS / CASKETS & URNS**

*In your time of need, you can rely on us for assistance and guidance in every aspect of planning your loved one's final arrangements.*



*Blauvelt Funeral Home*

Ronald LaFritz – Owner/Manager  
625 Broad Street • Waverly, NY  
607-565-7301 • blauveltfuneralhome.com

Your local, full-service funeral home,  
offering traditional burial and cremation options to fit every need.

*Bring us any funeral home's written charges to learn how you may save.*

### **Consider Pre-planning...**

Funeral pre-planning can save your loved ones the stress of making difficult decisions in their time of grief, as well as alleviate the financial burden of carrying out final arrangements.

It also ensures services will be conducted according to your wishes. To learn more, please contact us today to arrange a free, no-obligation consultation with a planning professional.





1-844-570-TECH (8324)  
solutions@datazang.com  
www.datazang.com

# TAKE YOUR TECH TO THE NEXT LEVEL

SCHEDULE YOUR  
**FREE ASSESSMENT TODAY**  
[WWW.DATAZANG.COM](http://WWW.DATAZANG.COM)

## INNOVATIVE IT SOLUTIONS

DATAZANG's IT and cyber security solutions for small businesses are tailored to fit specific needs and budgets, providing scalable and reliable technology services to help businesses grow and succeed.



### MANAGED IT SERVICES

Maximize your company's efficiency and productivity with our comprehensive managed IT



### CYBER SECURITY

Have peace of mind knowing your data and systems are protected from potential cyber attacks.



### IT PROJECTS & CONSULTING

Reduce costs, increase efficiency, and drive innovation with a custom IT strategy.

## CYBER SECURITY

IS YOUR BUSINESS PREPARED  
FOR A CYBER ATTACK?

## Our Advantage



Cut costs and optimize resources with our tailored IT solutions.



Minimize downtime and maximize productivity with 24/7 IT support available.



Receive reliable cyber security solutions to protect against evolving cyber threats.



# Elderwood *at Waverly*

37 North Chemung Street | Waverly, NY 14892 | 607-565-2861



## Benefits of Elderwood

- 200-bed community offering skilled nursing, long-term care and subacute rehab services
- Comprehensive, personalized orthopedic, cardiac and post-surgical rehab programs, including physical, occupational and speech therapy
- Outpatient therapy services are available. Specialty programs include pain management, vestibular therapy, lymphedema management, treatment of swallowing disorders, stroke recovery and more.
- Bright, spacious rehab gym with state-of-the-art equipment
- Comfortable private and semi-private rooms and suites
- Pleasant dining experience at every meal
- Daily housekeeping and laundry
- Lively social activities
- Complimentary WiFi
- Enclosed courtyard with butterfly garden and waterfall
- Full-service hair salon



Adult Medical Day Services | Assisted Living | Skilled Nursing | Subacute Rehab



# — BUYING | SELLING | INVESTING IN REAL ESTATE?

## LET'S WORK TOGETHER!

Buying or selling a home can be a stressful process if you don't have the right real estate agent. With 8 years of experience, you can rely on me to get you the best possible result.



**CENTURY 21**  
Jackson Real Estate

### CARRIE HENRY

✉ [CARRIE.HENRY@CENTURY21.COM](mailto:CARRIE.HENRY@CENTURY21.COM)  
☎ C: 607-857-0220  
O: 570- 888-0021  
♥ [WWW.CARRIEHENRY.C21.COM](http://WWW.CARRIEHENRY.C21.COM)

welcoming retreat for both business  
and leisure travelers



*Guests enjoy  
thoughtfully designed  
rooms, complimentary  
breakfast, high-speed  
Wi-Fi, and a  
well-equipped fitness  
center.*



1775 Elmira Street, Sayre, PA, 18840. Phone: 570 888 0001



**YOU CAN JOIN!**

**7 COUNTIES • 1 COMMUNITY**



**GUTHRIE  
COMMUNITY  
CREDIT UNION**



TIOGA, NY  
SCHUYLER  
TIOGA, PA  
CHEMUNG  
BRADFORD  
TOMPKINS  
ST. EUBEN

**GUTHRIEFCU.ORG**





## COTTON'S CONCRETE CONSTRUCTION

**Contact Us Today!**

**We look forward to  
working with you!**

**604 Gateway Industrial Park Rd.  
Athens, PA 18810**

**Phone(570) 888-4723  
E-mail: ccottoncc@stny.rr.com**



**Bluestone Brewing Company**  
18 Pitney Street  
Sayre, PA 18840

**Hours: Mon-Sat, 11-9  
570.731.0222**

**Experience the only brewpub  
within 35 miles**



**Award-winning  
Brews**



**Quality Food**

**Outdoor Seating**



**Craft Beer. Craft Food. Craft Soda.**



# Premier Wedding & Event Venue



**Best  
Western.**

## Grand Victorian Inn

255 Spring St, Sayre, PA 570-888-7711

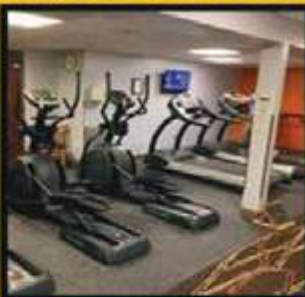
*Call today to schedule your site tour!*



## Fitness Express

Pool Sauna Racquetball

255 SPRING ST, SAYRE, 570-888-4381

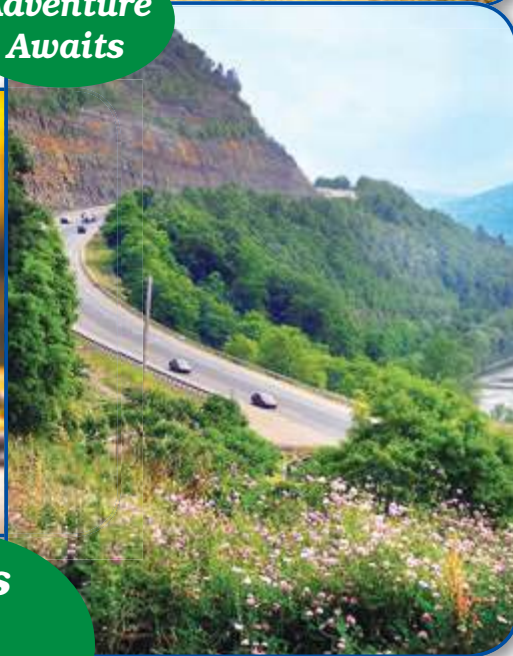


***We invite everyone from everywhere to come  
"Experience Bradford County!"***



**Adventure  
Awaits**

**History  
& Heritage**



**Postcard-  
Like  
Streets**



**Fairs  
&  
Festivals**



**Kayaking  
&  
Hiking**



**ENDLESS OPPORTUNITIES**  
**BRADFORD COUNTY, PA**

Bradford County Tourism Promotion Agency | 1 Washington Street, Suite B, Towanda, PA 18848

**www.visitbradfordcounty.com • 570.265•TOUR Follow us on**

